

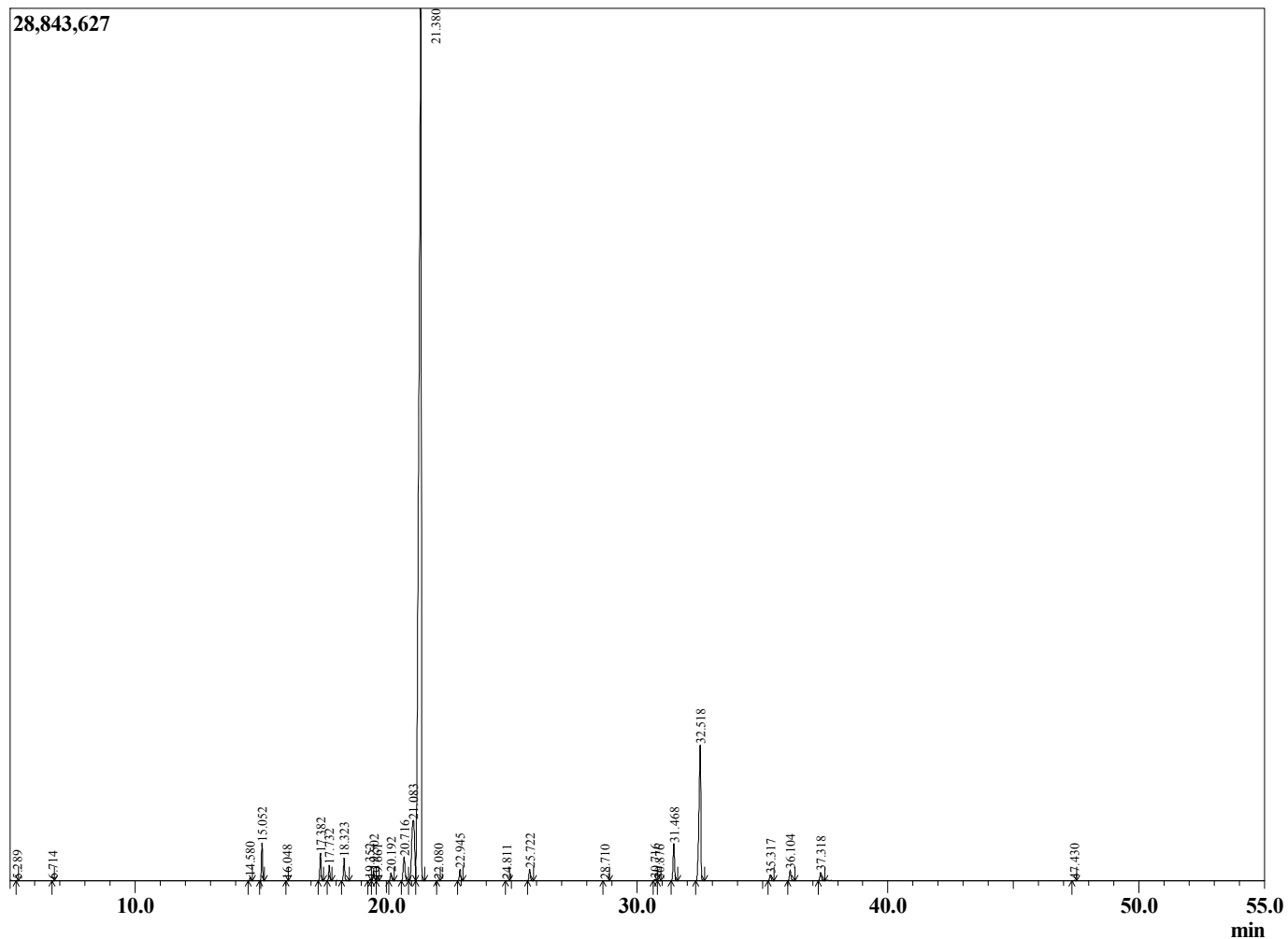
Sample Information

Analyzed : 7/14/2020 6:25:17 PM
 Sample Type : Essential Oil
 Sample Name : Eucalyptus radiata
 Injection Volume : 0.10

Eucalyptus Narrow Leaf
 Lot# AUZ28-ZT
 Country: Australia



Chromatogram Eucalyptus radiata



R.Time	Name	Area%
5.289	3-Methylbutanal	0.00
6.714	3-Methylbutanol	0.00
14.580	alpha-Thujene	0.13
15.052	alpha-Pinene	1.53
16.048	Camphene	0.01
17.382	Sabinene	1.20
17.732	beta-Pinene	0.68
18.323	Myrcene	1.00
19.352	Pseudolimonene	0.06
19.502	alpha-Phellandrene	0.47
19.661	3-Carene	0.02
20.192	alpha-Terpinene	0.38
20.716	para-Cymene	1.51
21.083	Limonene	6.07
21.380	1,8-Cineole	73.76
22.080	(E)-beta-Ocimene	0.02
22.945	gamma-Terpinene	0.55
24.811	Terpinolene	0.01
25.722	Linalool	0.57
28.710	trans-Pinocarveol	0.02
30.716	trans-beta-Terpineol	0.08
30.876	Borneol	0.01
31.468	Terpinen-4-ol	1.93
32.518	alpha-Terpineol	8.63
35.317	Neral	0.32
36.104	Geraniol	0.54
37.318	Geranial	0.46
47.430	trans-beta-Caryophyllene	0.02
		100.00